

INTEX

THE ULTIMATE  
PORTABLE SPEAKER!



INTEX

INTRODUCING

**BEAST 2000**

WIRELESS SOUNDBAR

**INTEX**



**5<sup>\*</sup> HOURS**

**PLAYBACK ON A SINGLE CHARGE**

\*Depends on play volume



INTEX

TAKE IT OUTDOORS WITH

**1200** mAh  
**BATTERY!**

INTEX



INTEX

# MULTI-COLORED RGB LIGHTS



FOR VIBRANT ATMOSPHERE



INTEX



# CHARGE & PLAY

WHILE INDOORS

A person is holding a black, rectangular portable speaker. The speaker has a textured surface and a glowing blue and purple LED light strip along its edges. The person's hands are visible, one with a ring and a beaded bracelet, and the other with a watch and a tattoo. The background is a blurred outdoor setting.

INTEX

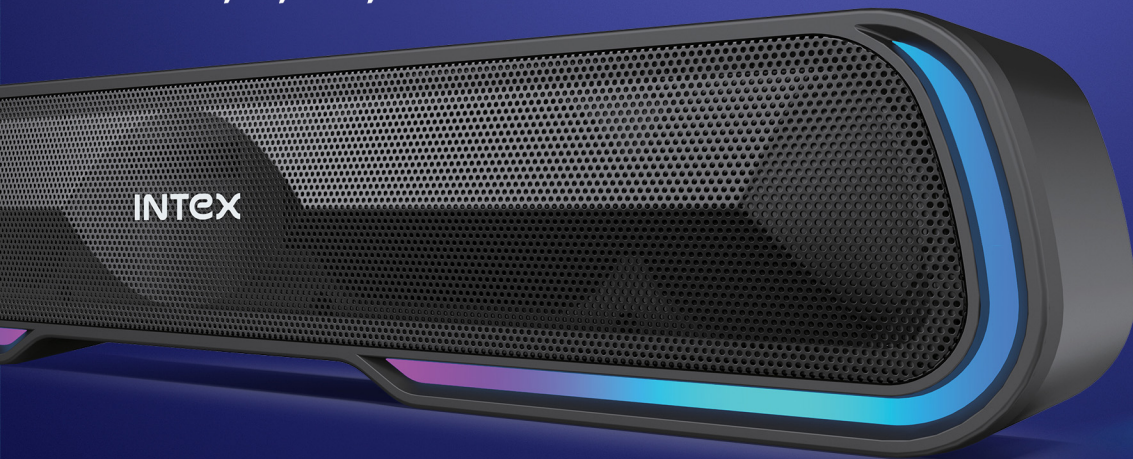
**DESIGNED**  
TO BE CARRIED AROUND



INTEX

# MULTIPLE CONNECTIVITY

USB, TF, AUX, BT v5.0



INTEX

# BEAST 2000

## WIRELESS SOUNDBAR



TWS BT  
Pairing



11 Modes  
RGB Lights



16W  
Powerful  
Output



USB, TF, FM  
Playability



Dual Radiator



52 mm Driver



Up to 5 Hours\*  
Playtime  
\*Depends on play volume



High Sensitive Mic  
for Calling

**YOUR PORTABLE COMPANION**  
WITH **11 MODES RGB** LIGHTS





**INTEX**

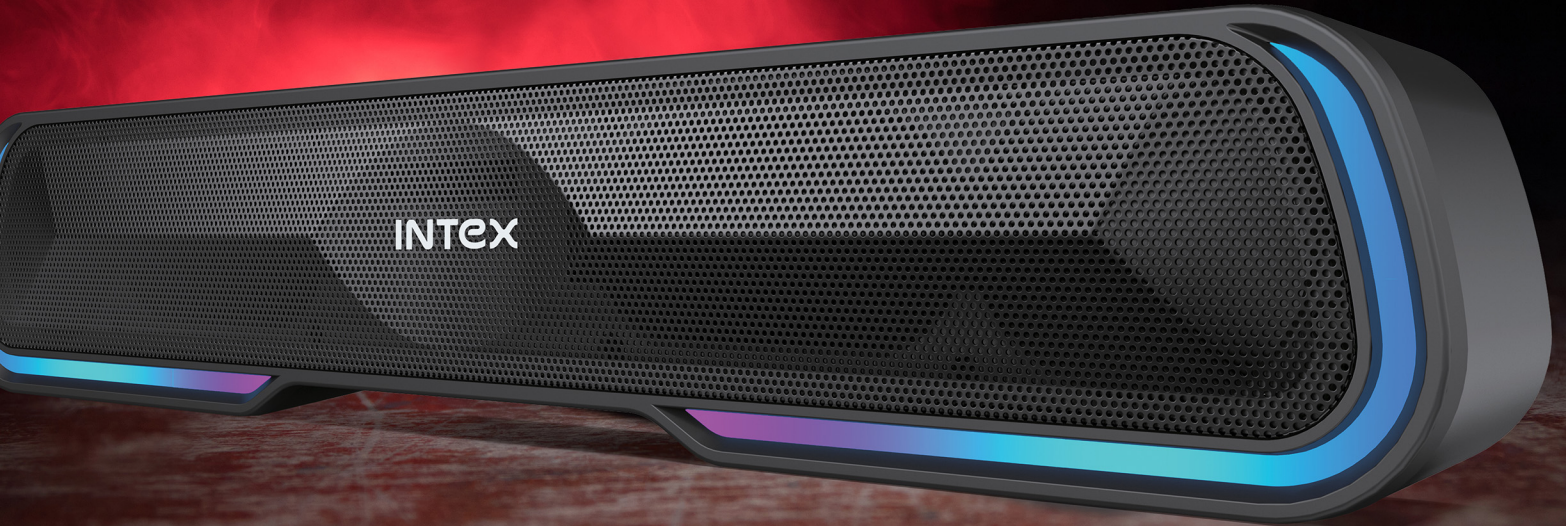
# Intex Technologies (India) Ltd.

Regd. Office: A-61, Okhla Industrial Area, Phase-II, New Delhi-110020

900+ Service Touch Points | [www.intex.in](http://www.intex.in)

Email: [info@intex.in](mailto:info@intex.in)

Customer Care No.: 0120-489-5555



@intextechnologies



@IntexIndia



@IntexBrand



@IntexTechnologies