

INTEX

PRESENTING
A REVOLUTION

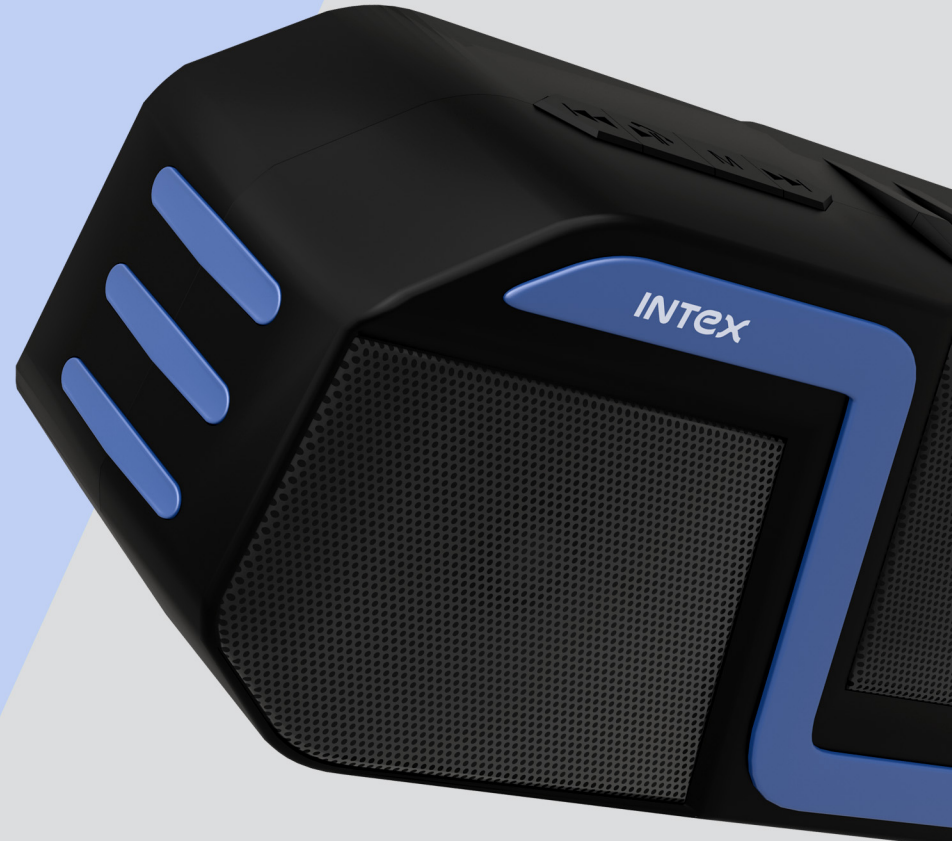
BEAST 801
PORTABLE BT SPEAKER



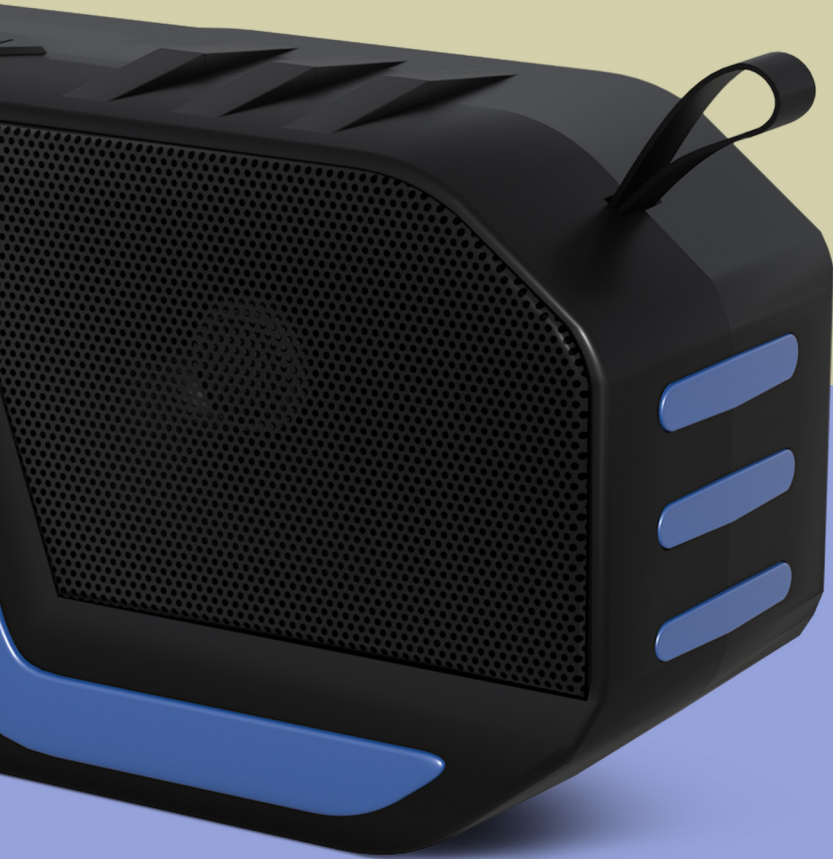
INTEX

STRIKING LOOKS WITH STUNNING DETAILS

The aesthetics of Beast 801 are stylishly designed for a premium look & smooth finish while handling the product



INTEX



HIGH GRADE FINISH

For ease of portability, the speaker is equipped with a sturdy Silicone holder and rubber finish for extra grip

INTEX



10W OPTIMIZED SOUND PROJECTION

The speaker delivers an impressive surround sound that is perfect for parties, travel & outdoor activities



INTEX

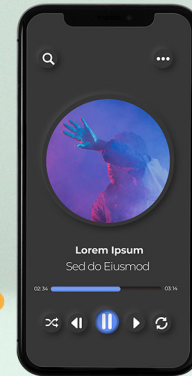
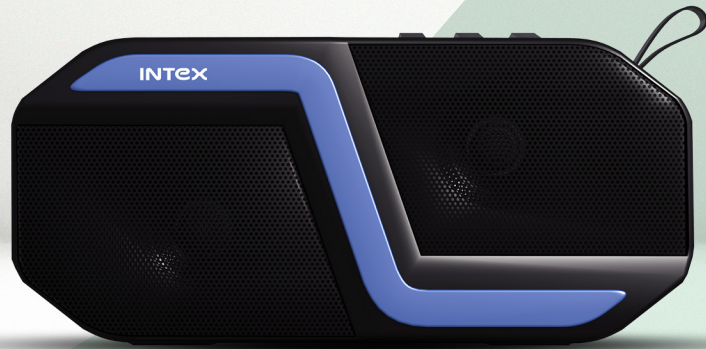
TOP NOTCH AUDIO EXPERIENCE

Feel the beats in your music with the penetrating bass delivered by high performance sound drivers

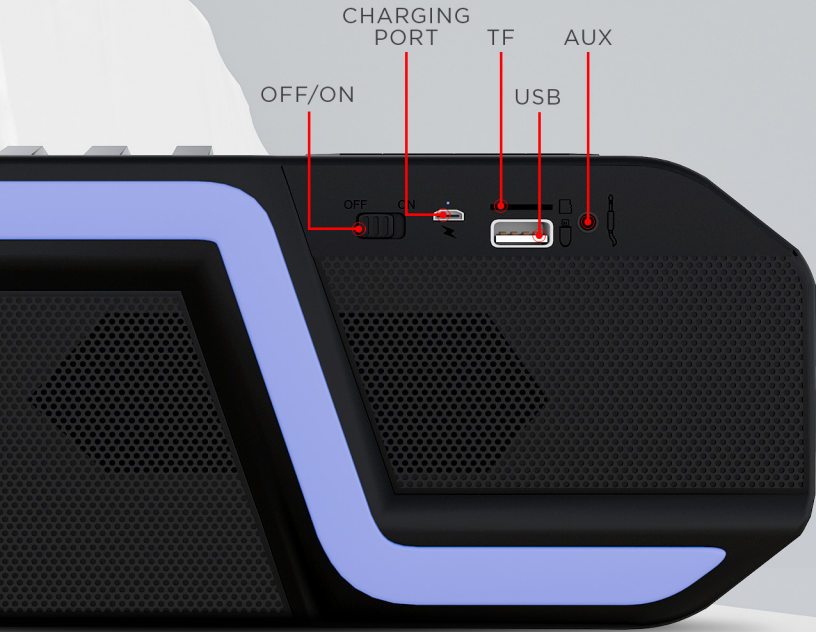
INTEX

UNIFIED BLUETOOTH CONNECTIVITY

Setting up and linking your device is super quick
and easy for music or handsfree calling



INTEX



PICK YOUR PLAYMATE

With multiple playmodes like Digital FM, AUX, USB, Bluetooth and TF card, you can connect with your favourites music at any time



INTEX

FASHIONABLE COLOUR OPTIONS



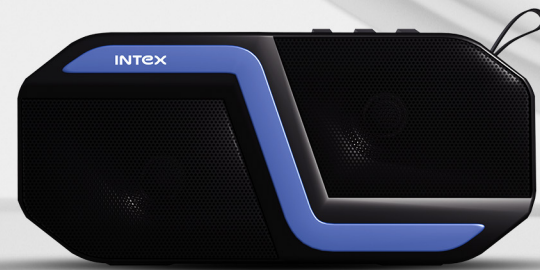
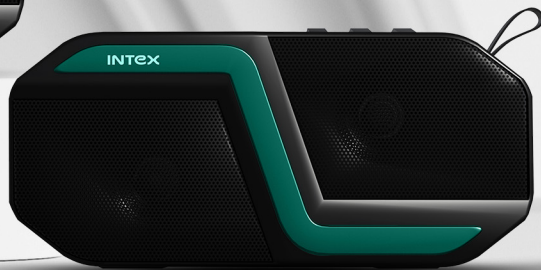
CARBON BLACK



MILITARY GREEN



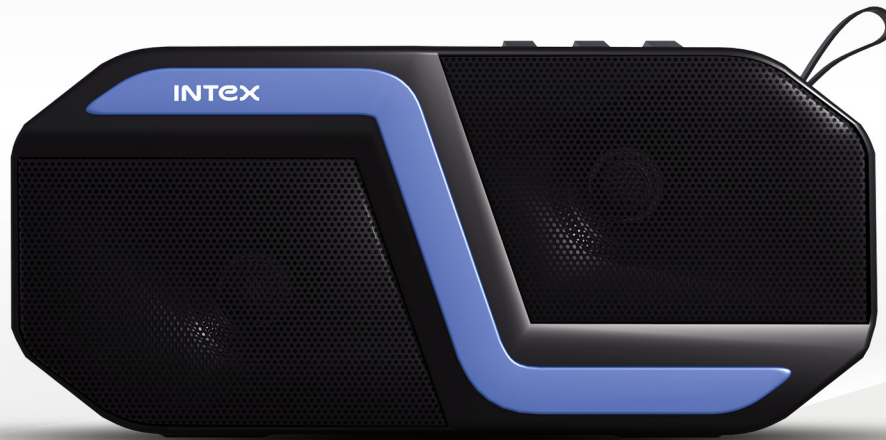
ELECTRIC BLUE



INTEX

BEAST 801

PORTABLE BT SPEAKER



Connectivity	: Bluetooth
Bluetooth Version	: V 5.0
Power Output	: 10W
Music Play Time	: 3 Hrs.

(at 100% of the play volume)

Distance	: 10 Meters
Sensitivity	: 85 ± 3 dB
Frequency	: 12Hz-120KHz
Power Supply	: DC 5V, 1A
Charging Interface	: Micro USB
Net Weight	: 524 g
Gross Weight	: 617 g
Product Size	: 20.1 x 9.6 x 6.9 cm
Box Dimensions	: 23.8 x 8.6 x 13 cm



**Outstanding
Battery Life**



**Dynamic Bass
& Clarity**



**Multi Mode
Playmate FM/
USB/BT/TF/AUX**



**Wireless
Calling Function**



INTEX

THANK YOU

Intex Technologies (India) Ltd.

Regd. Office: A-61, Okhla Industrial Area, Phase-II, New Delhi-110020
1000+ Service Touch Points | www.intex.in | Email: info@intex.in
Customer Care No. : 0120-402-8800

 @intextechnologies  @IntexIndia  @IntexBrand  @TechnologiesIntex