

INTEX



FRAMELESS DISPLAY FOR  
**INFINITE ENTERTAINMENT**

INTRODUCING  
**LED-SHF32102 | 80CM (32)**



INTEX



EXPERIENCE  
**16.7 MILLION**  
**COLORS**

**INTEX**



**HIGH-POWER**  
**24W**  
**AMPLIFIED SPEAKER**





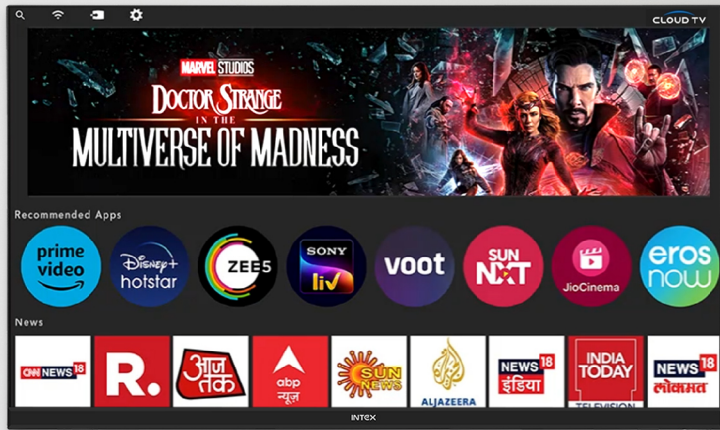
INTEX

DIVE INTO A  
**32"**  
WORLD OF  
**MAGIC**

HD Display, 1366x768 Resolution





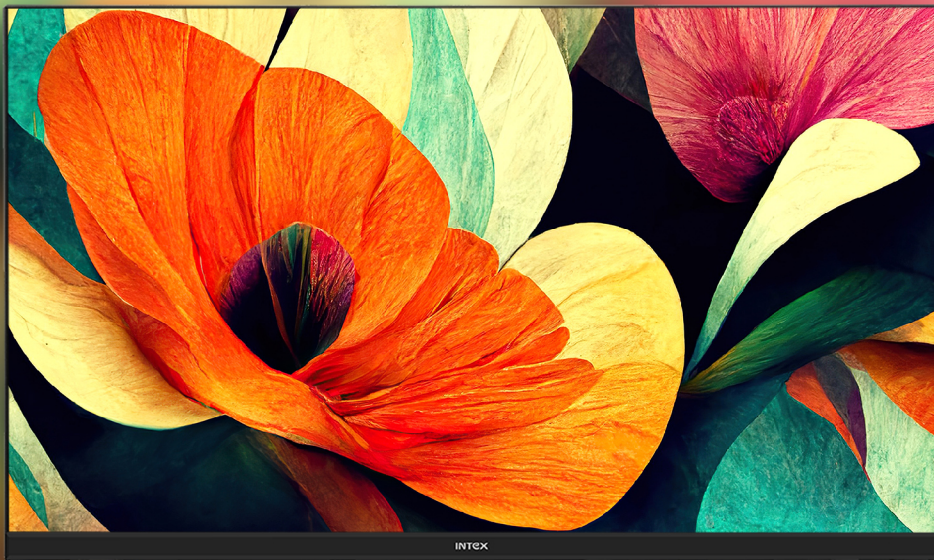


PATCHWALL PUTS  
**OTT PLATFORMS**  
AT YOUR FINGERTIPS



INTEX

# 250-NITS HORIZON DISPLAY





INTEX



EASY SCREEN SHARING  
**Maxhub share & Kindlink**



INTEX

HIGH  
**PERFORMANCE**  
WITH

**1GB RAM**

**8 GB ROM**

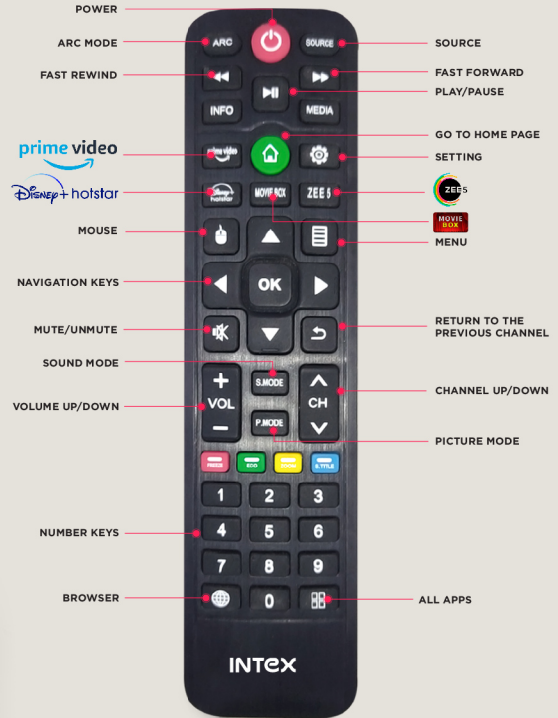






# SMART REMOTE

FOR SMART CONTROL





## LED-SHF32102 | 80CM (32)

Picture Quality	: HD Display, 1366x768 Resolution
Sound	: Supreme sound effect, 12W x 2 Bottom firing open speakers
Connectivity	: 2 HDMI Terminals, 2 USB Terminals, 2 AV Inputs, Digital Audio Out, RF IN, Built-in Wi-Fi, 1 Ethernet Port, Headphone Out
Smart Features	: CPU: Quad-Core A53 1.5GHz GPU: Mali-G31MP2 1 GB RAM, 8 GB Storage
Operating System	: Android 9.0 (AOSP)
Typical Brightness (+/- 10%)	: 250 nits
Screen Mirroring	: Kindlink, Maxhub Share

**CLOUD TV**  
CERTIFIED AOSP



**FRAMELESS**  
design

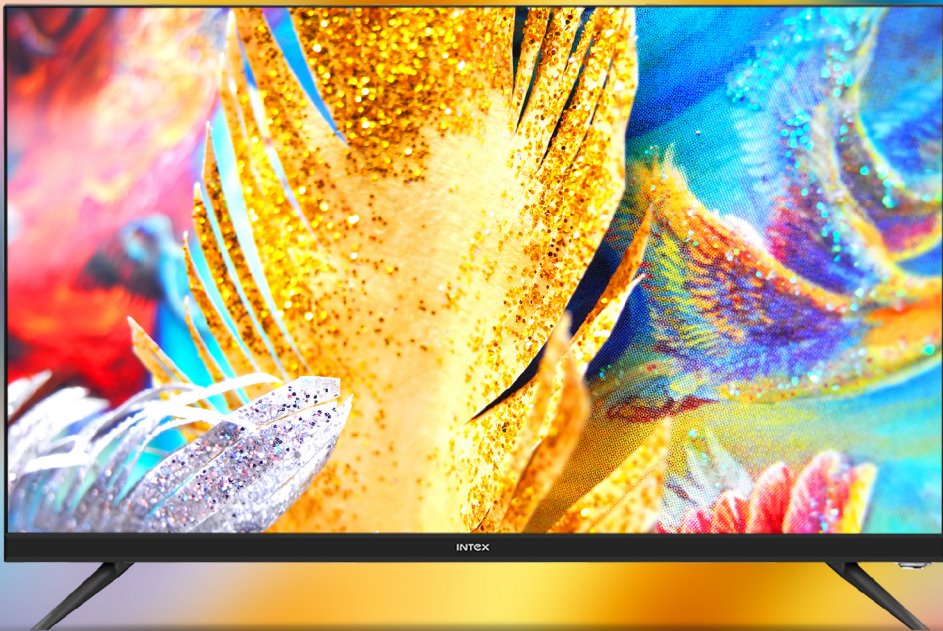
**ANDROID**  
9.0(AOSP)



**1 YEAR**  
WARRANTY



**INTEX**



# THANK YOU


**INTEX TECHNOLOGIES (INDIA) LTD.**


Regd. Office: A-61, Okhla Industrial Area, Phase-II,  
New Delhi-110020


900+ Service Touch Points | [www.intex.in](http://www.intex.in) | Email:  
[info@intex.in](mailto:info@intex.in) | Customer Care No. : 0120-489-5555



Scan and Discover  
World-Class Products from Intex

 @intextechnologies

 @IntexBrand

 @IntexIndia

 @IntexTechnologies