

INTEX

MADE IN
INDIA

LED-SHV32108 | 80CM (32)

PRESENTING

SOUNDBAR

EQUIPPED SMART LED TV



INTEX



FRAMELESS
design

ADVANCED PICTURE
PROCESSING

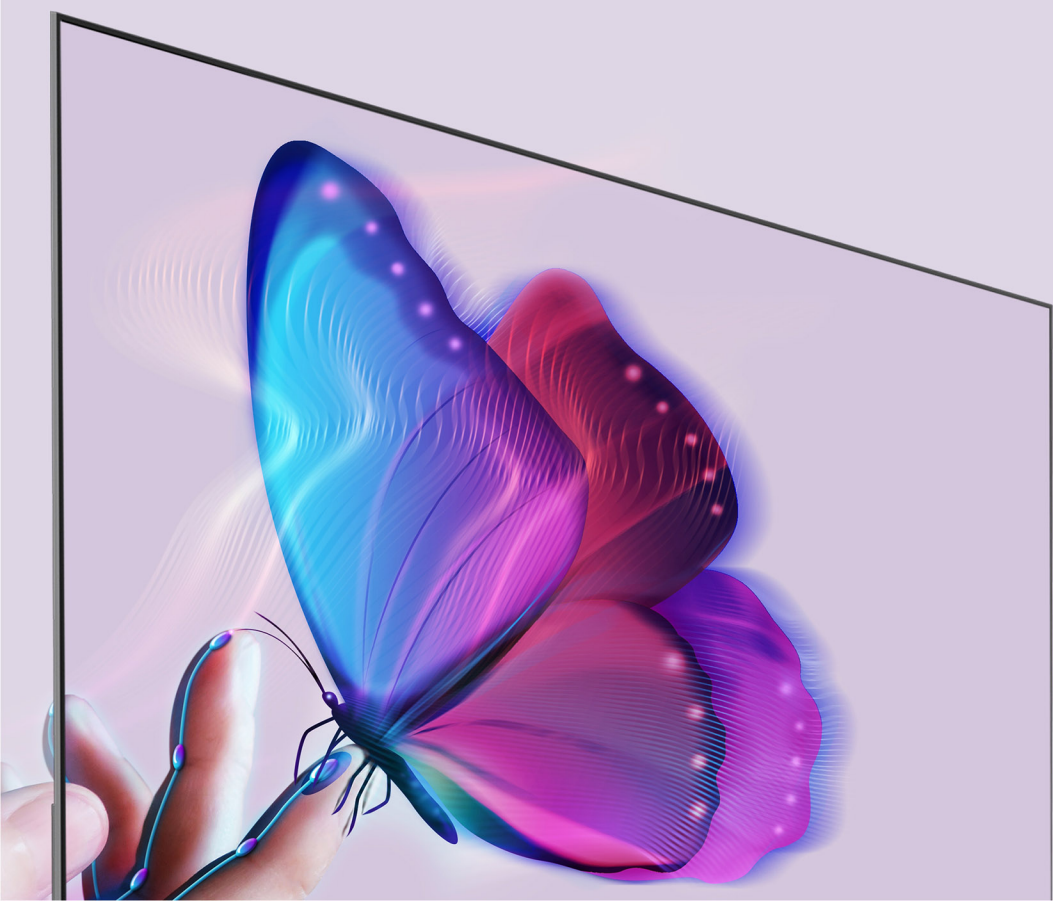
INTEX



INTEX

THEATER QUALITY SOUND EXPERIENCE
20W FRONT FIRING SPEAKERS

INTEX



**16.7 MILLION
COLOURS**
AN EXPLOSION
OF COLOR

INTEX

SMART REMOTE WITH
VOICE ACTIVATION
STREAMLINED CONNECTION SIMPLIFIES INTERACTION



Open Prime Video

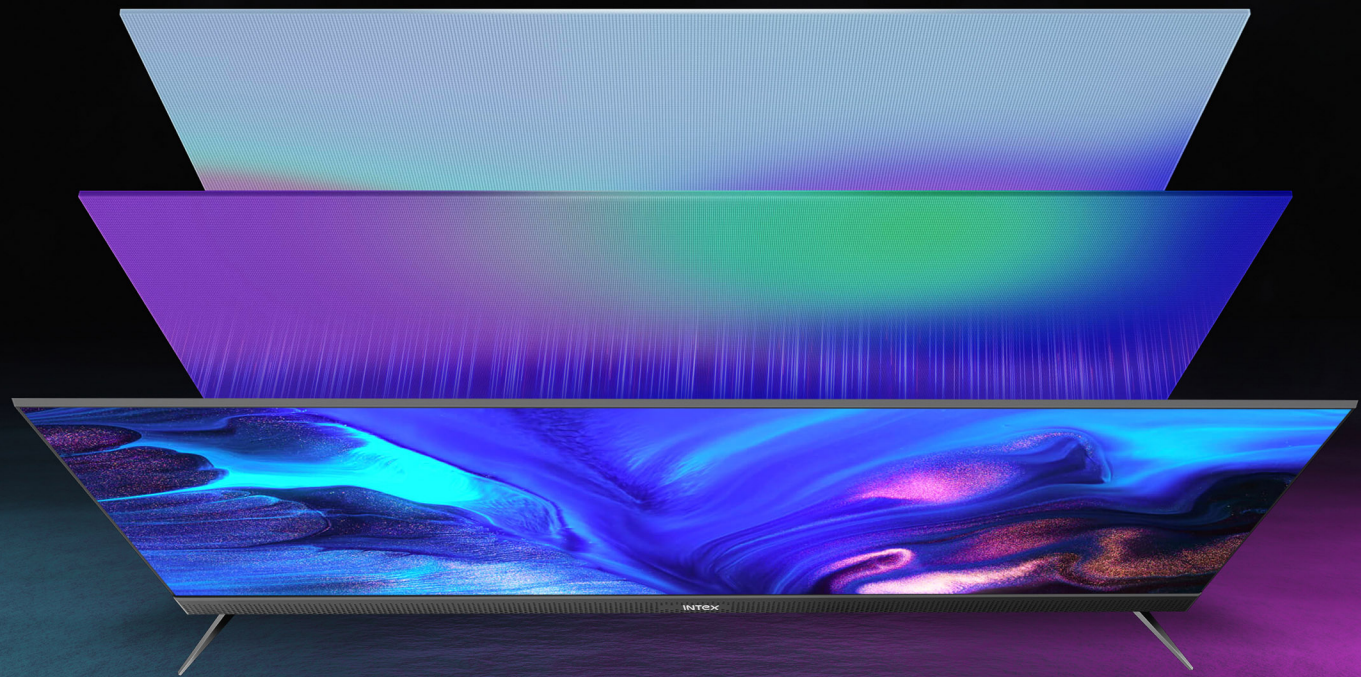


QUICK
ACCESS
BUTTONS

INTEX

A GRADE LED PANEL

HIGH-QUALITY PICTURES



INTEX



Android 9.0AOSP

OTT APPS
AT YOUR TIPS

INTEX

**PUSH-FIT
FOOT DESIGN**
FOR EASY ASSEMBLY



INTEX

EASE OF
CONNECTIVITY

**ANDROID
9.0(AOSP)**

BUILT-IN **WiFi**

CLOUD TV
CERTIFIED AOSP

HDMI x 2 | **USB x 2** | **AV x 2** | **ETHERNET PORT x 1**

HEADPHONE x 1 | **Digital Audio OUT x 1**

INTEX

LED-SHV32108 | 80CM (32)

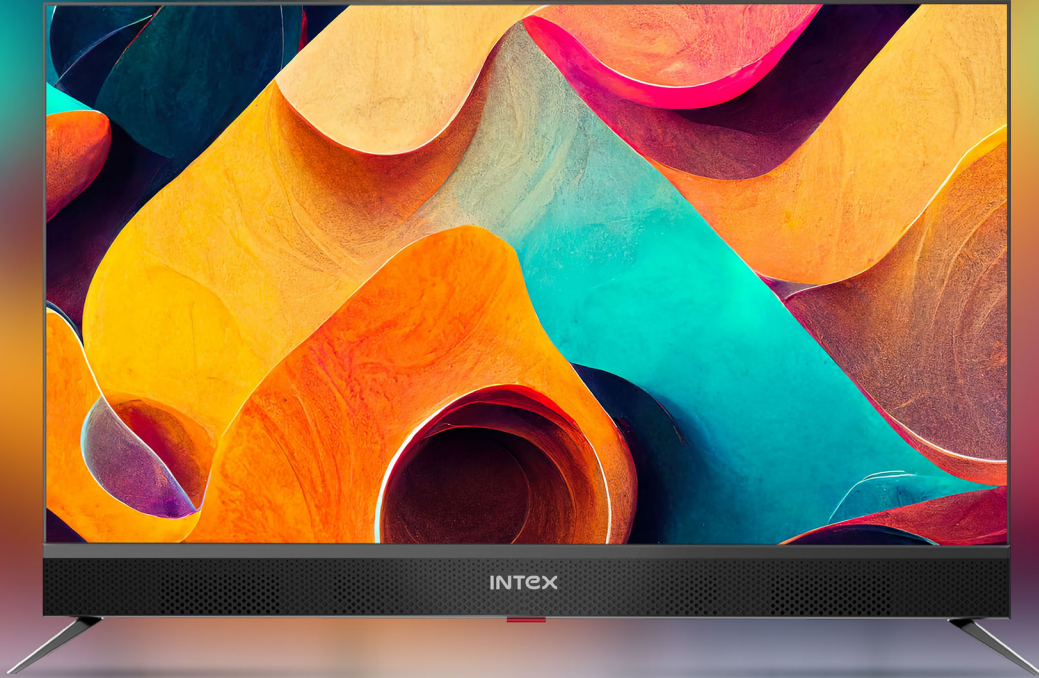
(ANDROID SMART TV)

- Picture Quality : HD Display, 1366 x 768 Resolution
- Sound : Supreme Sound Effect, 10W x 2 Front Firing Speaker with Soundbar
- Connectivity : 2 HDMI Terminals, 2 USB Terminals, 2 AV Input, Built in Wi-Fi, Wi-Fi Direct, 1 Ethernet Port, 1 Headphone Out, Optical Audio Out, BT Out
- Smart Features : Quad-Core A53 1.5 GHz
Mali- G31 MP2
1 GB RAM, 8 GB Storage
- Operating System : Android 9.0 (AOSP)
- Power Supply : 100-240V



2 YEARS
WARRANTY

INTEX



THANK YOU

INTEX TECHNOLOGIES (INDIA) LTD.

Regd. Office: A-61, Okhla Industrial Area, Phase-II, New Delhi-110020
900+ Service Touch Points | www.intex.in | Email: info@intex.in
Customer Care No. : 0120-489-5555



Scan and Discover
World-Class Products from Intex



@intextechnologies



@IntexBrand



@IntexIndia



@IntexTechnologies